

This is an excerpt from the  
**2011 QuickBooks Consultant’s Reference Guide.**

[Click here for more information.](#)

Copyright © 2010 The Sleeter Group – [www.sleeter.com](http://www.sleeter.com)

However, in a large network, this becomes a problem because there could be a larger number of users (users with QuickBooks properly installed and licensed on their workstation), and all may be accessing files stored on a central file server. If the number of concurrent QuickBooks users exceeds 5 (regardless of whether they are all working on the same data file), the database server will get bogged down and may start disconnecting users from their sessions. The problems may not be seen in some networks, where users are working largely in single-user mode, but where multi-user access is required on the network, the thresholds are easily reached. The QuickBooks Enterprise Solutions edition of the database server is tuned to handle a larger number of concurrent users and database transactions.

When a network has a potential number of concurrent users greater than 5, and where multiple data files are located on a central file server, our recommendation is to use the Enterprise Solutions database server rather than using the engine that ships with QuickBooks Pro or Premier. The Enterprise Solutions database server is compatible with QuickBooks Pro and Premier data files, and it significantly improves file server performance. For QuickBooks Pro/Premier users on larger networks, this means that they should plan the additional expense of a multi-user Enterprise Solutions license for the file server. The workstations can continue to operate with QuickBooks Pro/Premier versions.

### **“Floating Host” and “Alternate Multi-User Setup”**

If QuickBooks is not installed on the server, or if the hosting options are improperly set on the server and/or client computers, your installation may be using a “floating host.” With this configuration, the “host” of the QuickBooks company file will be the first client that opens the QuickBooks company file and (a) enters multi-user mode, or (b) selects the “*Start Hosting Multi-User Access*” option.” Therefore, since the host of the data files could be different each day (depending on which computer opens the data file first), the setup is referred to as a “floating host” setup. The documentation also refers to this setup as the “alternate multi-user setup.”

The proper setup we described before is referred to as the “recommended multi-user setup.”

Many configurations could cause a floating host condition, but all have the following characteristics:

- QuickBooks company files located on a shared network drive, and not “hosted” by QuickBooks installed on that computer
- One or more clients using are hosting multi-user access to the data file(s)

The main problems with a floating host are:

- Possible data loss if the current host of the data file is shut down while others are entering data

- Slow performance because each client must first “talk to” the host computer in order to read or write data to/from the file

## Correcting a Floating Host Situation

Version 2006 users are most likely to have the floating host problem, but in version 2007 and above, it is theoretically possible that the problem will exist if the main server does not properly start up the database server, if it somehow gets turned off, or if it is running but clients are unable to communicate with it. It’s quite unlikely to occur, but these procedures should correct the problem if it occurs.

In order to correct the floating host condition on your network, you will need to do the following:

Identify which computer should be the “host” for your data files and move the files to that computer. You should put your data files in a folder and share that folder with other users on the network. See the section beginning on page 347 for specifics.

- Step 1. On each client computer (all workstations that will not be the host of the data files), open each data file that has ever been opened by this client and deactivate multi-user hosting by selecting the **File** menu, then **Utilities**, and then select **Stop Hosting Multi-User Access...** (see Figure 9-17).

If you don’t see **Stop Hosting Multi-User Access...**, and instead see a menu item that says **Host Multi-User Access...**, then hosting is already disabled and you can skip this step and move to the next workstation.

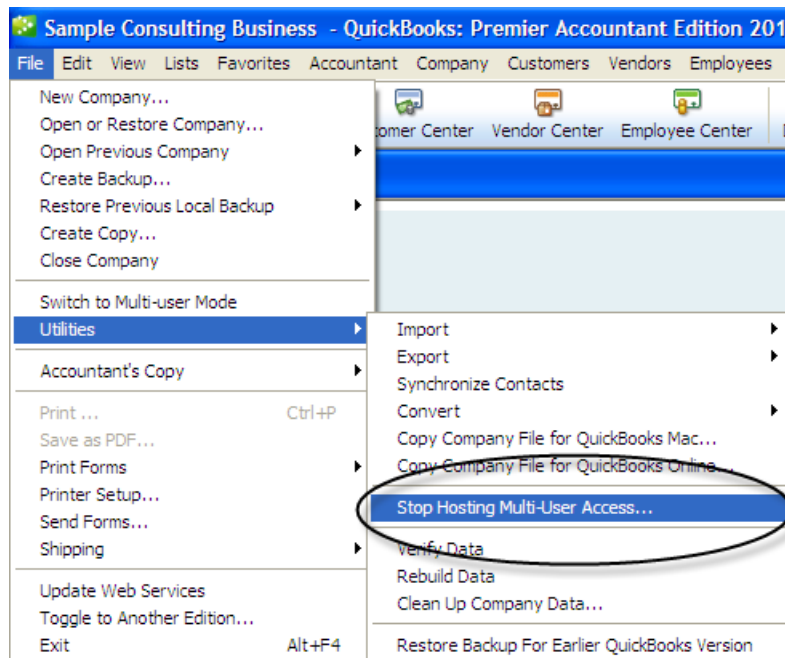


Figure 9-17 Deactivating Multi-User Hosting

## Legitimate Uses of Alternate Setup

Although it is highly recommended that you use the “recommended setup”, there are environments in which you won’t be able to comply with its requirements. There are some